




# Capstone Project By Katie Mello

Aspiring Leaders in Special Education Cohort 2  
UCONN Center for Excellence in Developmental Disabilities



○  
○ **Creating a district  
webpage full of  
resources for parents  
transitioning to  
Northwestern Regional  
School District** ○  
○

# Steps to complete my project



01

Identify an area for improvement

02

create a vision of your plan

03

Research research research

04

collect findings and get support

05

Create the website

06

Publish and inform families





# Step 01

## Identifying an area of need



### **Competency 4 Leading with Others**

This competency states that you will be able to motivate and lead diverse partners to implement strategies to improve the special education system and outcomes for students and families representing diverse linguistic, racial, ethnic, cultural, socio-economic, educational, and historically underrepresented backgrounds.

This project encapsulates the fourth competency., by building a website with parent resources the district is communicating and disseminating information about the purpose, vision, and mission of the district's special education system to families and other partners

# Search Results

48 results (1 millisecond)

## Special Education

<https://www.nwr7.com/high-school/academics/special-education>

### Special Education

## Special Education

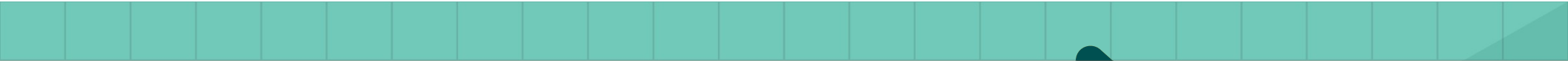
SPECIAL EDUCATION  
DEPARTMENT

Department Head:

Mr. Steven Carvalho  
860.379.8525 x2505

Department Faculty:

Ms. Karen Stiland  
Mrs. Debra Griffin  
Ms. Megan Ficke  
Ms. Beth Brady  
Mr. Donald Reese  
Ms. Sharon Roberts



The Northwestern Special Education Department provides a continuum of services for students identified with learning, social, or emotional challenges. This continuum includes self-contained classes for students in need of behavioral intervention as well as classes for students who need specialized and or remedial instruction. Team-taught classes are provided for students who need behavior and/or academic support in the regular education setting.

Northwestern's Special Education Department includes eight certified Special Education teachers and approximately fourteen full time Educational Assistants. In addition, Northwestern has two full-time psychologists and a full-time social worker.

The role of the psychologists and social worker at Northwestern is multidimensional. Psychologists and social workers run ongoing groups, do individual counseling, crisis intervention and are an integral part of the Planning and Placement Team (PPT) process and are responsible for individual cognitive, behavioral and academic testing. In addition, psychologists and social workers are available to students and parents on an ongoing and as-needed basis.

The State Department of Education has recently revised the Guidelines for Identifying children with Learning Disabilities. Please see below for more information on SRBI at Northwestern Regional #7 and for information on the new LD guidelines.

[SRBI and LD Eligibility](#)

[Information and links for Children and Youth Mental Health Services located in the greater Torrington area](#)



## STEP 02

### Develop a vision for your plan

The vision I have developed is a special education site where parents of children with different disabilities can go to to find resources available to them. Links to other websites and information on the programs we offer in our school. I would like information on the many programs we offer, transition services and steps after high school.

## STEP 03 Research Research Research

**After identifying a issue I started looking at other school's district special education websites**



This took some time and will need some more work. Our district is special in the fact that it is only a high school and a middle school. Many of the resources for smaller children are not appropriate for middle and high school students.

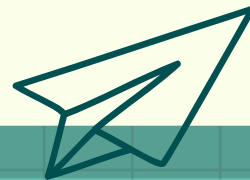
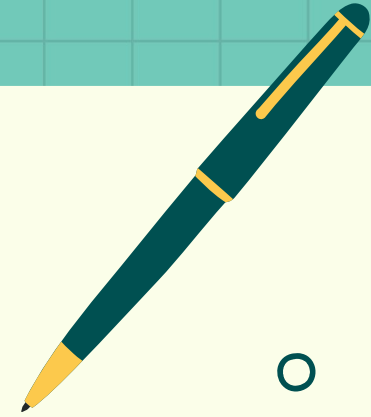
I also am looking to include a section that discusses transition services. As parents enter our district ,we are required to include transition planning in their IEPs. This information is new to parents and oftentimes the first time they are hearing it is at the PPT when their child is eligible for these services.






**04**

## **Collect findings and get support**





05

**Create the website**

# Website

Special Education Resources

# Parent Resources

Northwestern Regional School District works in collaboration with Shared Services to provide a wide range of services for students with disabilities. We are committed to educating all students who meet the criteria for eligibility according to the Individuals with Disabilities Education Act (IDEA). Under federal and state statutes, children requiring special education are those children who have a disability that adversely affects their educational performance and requires a specially designed program.

Special education services are designed to offer individualized programs creating opportunities for all students to succeed in the educational setting. We also provide assistance and support in the areas of mental, emotional, social and physical growth.

The Planning and Placement Team (PPT) will recommend and outline services necessary for the student to benefit from education. These services are provided in the "least restrictive environment" (LRE) possible which means that a student who has a disability should have the opportunity to be educated with non-disabled peers, to the greatest extent possible.



# Website



## Special Education Resources for Families

### State Department of Education



Autism Speaks

Autism Speaks is dedicated to promoting solutions, across the



LDA's mission is to create opportunities for success for all individuals with learning disabilities, including those with reading, writing, and math disabilities, through research, education, and advocacy.



# Website



Resource for individuals with cerebral palsy and other disabilities and their families.



The National Down Syndrome Congress (NDSC) is a not-for-profit organization dedicated to an improved world for individuals with Down syndrome

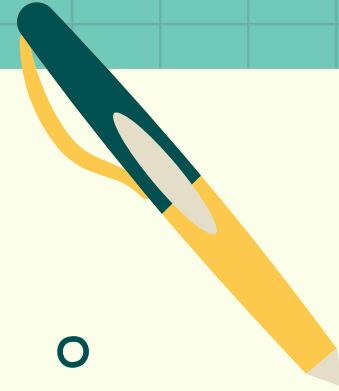


Resource for individuals with visual impairments and their families.



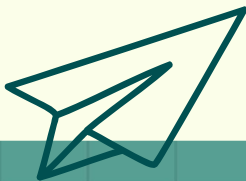
Resource for individuals with hearing loss and their families.





06

# Publish





# In Conclusion

In conclusion, this capstone project is a project that shows dedication to all students in the district. It is important for the information on the website stay current and the links remain active. This will need to be done on a yearly basis. Having a place where parents can find support and the information they need communicates to our parents communities and partners that everyone is accepted and important at our school.



