

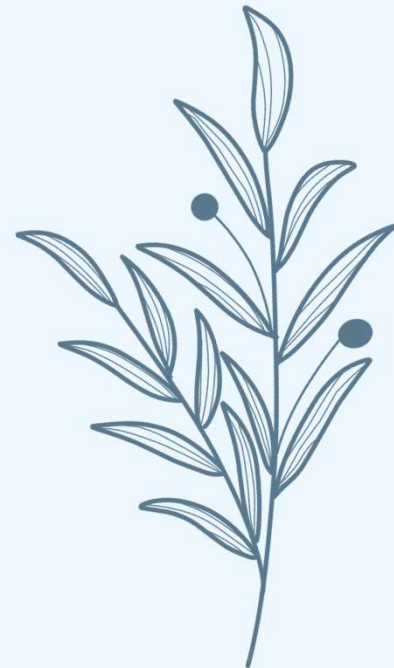


Enhancing PPT Processes & Family Engagement

Heather Godi
Hebron Public Schools

Background

The relationship and partnership between families and schools plays a crucial role in fostering student success. Effective communication between schools and families builds trust. The trust fosters a collaborative environment ensuring that the student's best interests are always prioritized.



Goal



Strengthen Partnerships with Families

Ensure families feel welcomed, informed, and recognized as key members of their student's educational program

Updating PPT Processes & Best Practices

01



BEFORE
PPT Meeting



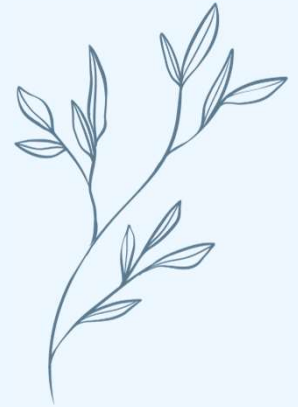
DURING
PPT Meeting



AFTER
PPT Meeting



Before PPT Meeting



Parent Input Survey

The parent input form will be sent out to families prior to the PPT meeting to inquire about student's interests, strengths, concerns, strategies, etc.



Parent Agenda

The agenda outlines the progression of the meeting giving families notice in what to expect during the PPT meeting



Review Evaluations

Send copy of evaluation home at least 3 days prior to PPT, as well as offer a meeting with family to review initial/triennial evaluation results

During PPT Meeting



Welcoming Environment

Name plates at table

Consider placement and entry of team members



Parent Engagement

Review Parent Input Form with parents and team

Ask for any additional updates, questions/concerns



Team Collaboration

Collaborative and meaningful discussion of information



After PPT Meeting



Special Education Handbook

Distribute as a resource for families - includes informational documents (ex. special education timeline, school team members, FAQs, and local/statewide resources/agencies)



Parent Engagement

PPT meetings can present an overwhelming amount of information for families - follow up with the family a day or two after the PPT to ask if they have any questions or anything the team can help with



Partnership



The partnership and relationship between families and schools is integral to student success. Through collaborative efforts, schools and families can create a nurturing environment that maximizes each student's potential.





Thank
You